



G2 Connect

4400 N. Scottsdale Rd. #9396
Scottsdale, AZ 85251

Panera Bread

CN-1638

6405 S. Virginia St.
Reno, NV 89511

Roof Design Loads

Building Code: 2018 IBC
LL Deflection: L/240
TL Deflection: L/180

Roof LL: 21 PSF Wind Speed: 115 MPH
Roof DL: 20 PSF Wind Cat: II
Ground SL: 20 PSF Wind Exp: C
Roof SL: 21 PSF Net Uplift: Per Plans
TCLL: 21 PSF
TCDL: 10 PSF
BCLL: 0 PSF
BCDL: 10 PSF

Additional DL at any point:
(Concurrent with Base D+L Loads only)
TC: 500#
BC: -

Designer: LAF

Revision Schedule

| No. | Description | Date |
|-----|-------------|------------|
| 2 | OFA | 10/24/2022 |
| | | |
| | | |
| | | |

PRS™ Roof Layout

3

| Truss Mark | Count | Clear Span | MFG Length | Low End Depth | High End Depth | Truss Type | Hanger Left | Hanger Right |
|------------|-------|----------------|----------------|---------------|----------------|---------------|--------------|--------------|
| RT01 | 11 | 3T - 8 3/16" | 3T - 7 13/16" | 2' - 0" | 2' - 7 15/16" | G2T - 44S | None : 0 | G2 WHL : 4/4 |
| RT02 | 9 | 44' - 11 1/2" | 44' - 11 1/8" | 2' - 8 1/8" | 3' - 7 1/4" | G2T - 44S | G2 WHL : 4/4 | None : 0 |
| RT02A | 1 | 45' - 7 15/16" | 45' - 7 15/16" | 2' - 8" | 3' - 7 1/16" | G2T - 44S/46S | None : 0 | None : 0 |
| RT02B | 2 | 45' - 7 9/16" | 45' - 7 3/16" | 2' - 8 1/8" | 3' - 7 1/4" | G2T - 44S | G2 WHL : 4/4 | None : 0 |

| Panel Mark | Count | MFG Length | PSP Height | Type | PAL Connection |
|------------|-------|---------------|--------------|------|----------------|
| PSP01 | 25 | 3' - 8 1/4" | 6' - 10 1/2" | PSP6 | A-1 |
| PSP01A | 1 | 3' - 3 7/8" | 6' - 10 1/2" | PSP6 | A-1 |
| PSP01B | 1 | 1' - 9 5/16" | 6' - 10 1/2" | PSP6 | A-1 |
| PSP02 | 4 | 3' - 8 1/4" | 7' - 10 1/2" | PSP6 | A-2 |
| PSP02A | 1 | 2' - 8 9/16" | 7' - 10 1/2" | PSP6 | A-2 |
| PSP02B | 1 | 2' - 10 9/16" | 7' - 10 1/2" | PSP6 | A-2 |
| PSP02C | 1 | 2' - 5 1/2" | 7' - 10 1/2" | PSP6 | A-2 |
| PSP03 | 22 | 3' - 8 1/4" | 5' - 10 1/2" | PSP6 | A-1 |
| PSP03A | 2 | 3' - 3 7/8" | 5' - 10 1/2" | PSP6 | A-1 |
| PSP03B | 2 | 3' - 9 3/8" | 5' - 10 1/2" | PSP6 | A-1 |
| PSP03C | 1 | 3' - 7 5/16" | 6' - 10 1/2" | PSP6 | A-1 |
| PSP03D | 1 | 3' - 7 5/16" | 7' - 10 1/2" | PSP6 | A-2 |
| PSP03E | 2 | 3' - 7 5/16" | 5' - 10 1/2" | PSP6 | A-1 |

| Product | LF | Material |
|----------------|-----|-----------|
| 2x6 BC Bracing | 368 | 2x6 DF #2 |

| Count | Hanger Name | Joist Nailing | Header Nailing |
|-------|-------------|---------------|----------------|
| 76 | PH44 | -- | (4) 0.148 x 3 |
| 22 | WHL4/4 | 6 - 16d x 2.5 | 10 - 16d |

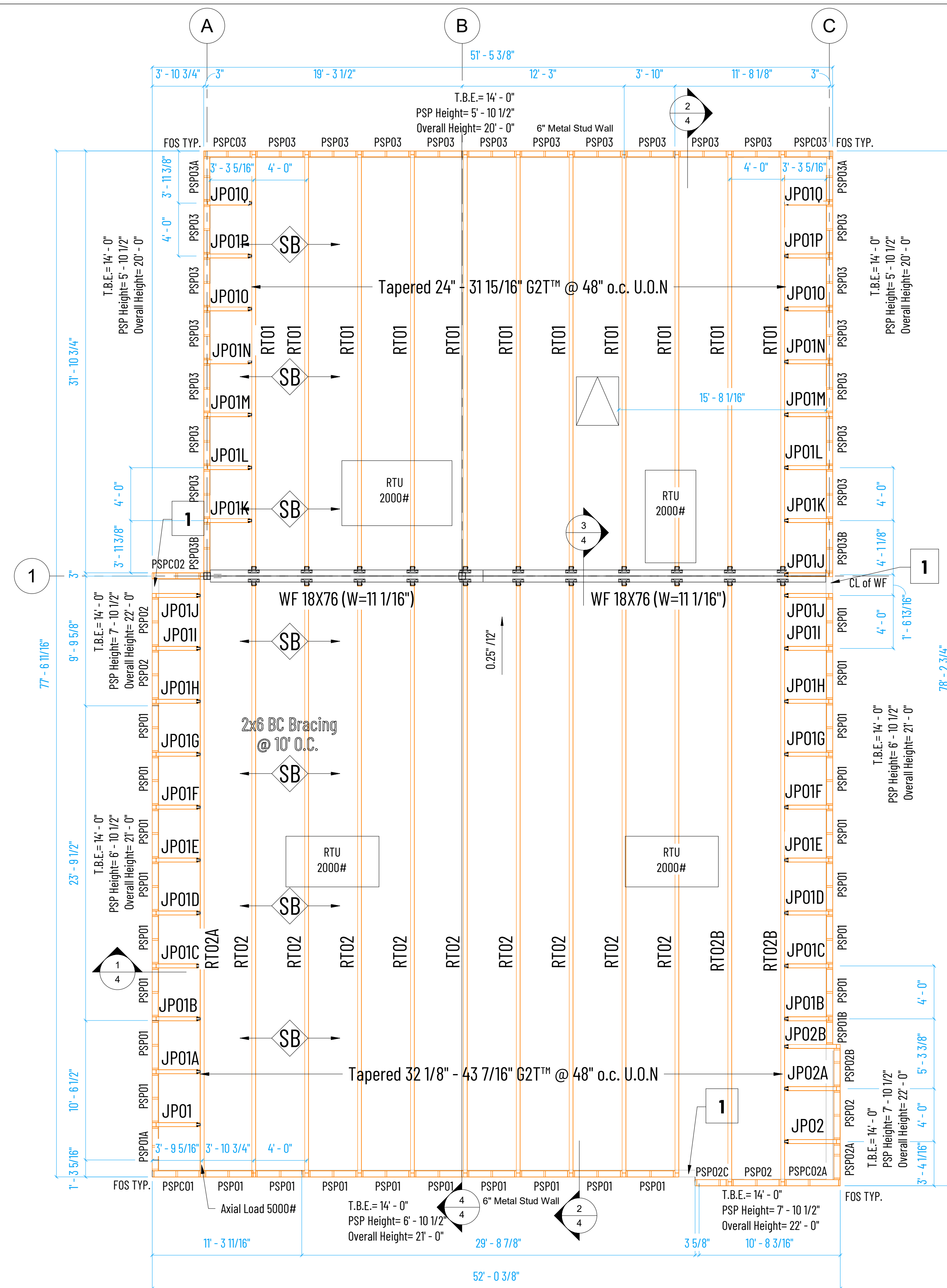
| Count | Product |
|-------|---------|
| 104 | TLOCK6 |
| 1070 | FLOK2.9 |
| 131 | FLOK4.5 |

| Product | LF | Material |
|---------|-----|----------|
| 2x6 | 272 | DF #1 |

| Truss Mark | Count | Base Span | MFG Length | Truss Depth | Truss Type | Hanger | Inverted Hanger |
|------------|-------|--------------|---------------|---------------|---------------|---------|-----------------|
| JP01 | 1 | 3' - 7 9/16" | 3' - 6 13/16" | 3' - 6 7/16" | G2T - 44S/46S | PH : 44 | PH : 44 |
| JP01A | 1 | 3' - 7 9/16" | 3' - 6 13/16" | 3' - 5 7/16" | G2T - 44S/46S | PH : 44 | PH : 44 |
| JP01B | 2 | 3' - 7 9/16" | 3' - 6 13/16" | 3' - 4 7/16" | G2T - 44S/46S | PH : 44 | PH : 44 |
| JP01C | 2 | 3' - 7 9/16" | 3' - 6 13/16" | 3' - 3 7/16" | G2T - 44S/46S | PH : 44 | PH : 44 |
| JP01D | 2 | 3' - 7 9/16" | 3' - 6 13/16" | 3' - 2 7/16" | G2T - 44S/46S | PH : 44 | PH : 44 |
| JP01E | 2 | 3' - 7 9/16" | 3' - 6 13/16" | 3' - 1 7/16" | G2T - 44S/46S | PH : 44 | PH : 44 |
| JP01F | 2 | 3' - 7 9/16" | 3' - 6 13/16" | 3' - 0 7/16" | G2T - 44S/46S | PH : 44 | PH : 44 |
| JP01G | 2 | 3' - 7 9/16" | 3' - 6 13/16" | 2' - 11 7/16" | G2T - 44S/46S | PH : 44 | PH : 44 |
| JP01H | 2 | 3' - 7 9/16" | 3' - 6 13/16" | 2' - 10 7/16" | G2T - 44S/46S | PH : 44 | PH : 44 |
| JP01I | 2 | 3' - 7 9/16" | 3' - 6 13/16" | 2' - 9 7/16" | G2T - 44S/46S | PH : 44 | PH : 44 |
| JP01J | 3 | 3' - 7 9/16" | 3' - 6 13/16" | 2' - 8 7/16" | G2T - 44S/46S | PH : 44 | PH : 44 |
| JP01K | 2 | 3' - 7 9/16" | 3' - 6 13/16" | 2' - 7" | G2T - 44S/46S | PH : 44 | PH : 44 |
| JP01L | 2 | 3' - 7 9/16" | 3' - 6 13/16" | 2' - 6" | G2T - 44S/46S | PH : 44 | PH : 44 |
| JP01M | 2 | 3' - 7 9/16" | 3' - 6 13/16" | 2' - 5" | G2T - 44S/46S | PH : 44 | PH : 44 |
| JP01N | 2 | 3' - 7 9/16" | 3' - 6 13/16" | 2' - 4" | G2T - 44S/46S | PH : 44 | PH : 44 |
| JP01O | 2 | 3' - 7 9/16" | 3' - 6 13/16" | 2' - 3" | G2T - 44S/46S | PH : 44 | PH : 44 |
| JP01P | 2 | 3' - 7 9/16" | 3' - 6 13/16" | 2' - 2" | G2T - 44S/46S | PH : 44 | PH : 44 |
| JP01Q | 2 | 3' - 7 9/16" | 3' - 6 13/16" | 2' - 1" | G2T - 44S/46S | PH : 44 | PH : 44 |
| JP02 | 1 | 4' - 2 9/16" | 4' - 1 13/16" | 3' - 6 7/16" | G2T - 44S/46S | PH : 44 | PH : 44 |
| JP02A | 1 | 4' - 2 9/16" | 4' - 1 13/16" | 3' - 5 7/16" | G2T - 44S/46S | PH : 44 | PH : 44 |
| JP02B | 1 | 4' - 2 9/16" | 4' - 1 13/16" | 3' - 4 13/16" | G2T - 44S/46S | PH : 44 | PH : 44 |

| Note | Description |
|------|---|
| 1 | PSP™ Spaces < 16" will be Framed in Field |

FOR APPROVAL ONLY
NOT FOR CONSTRUCTION



Truss Layout
3/16" = 1'-0"

- GLOSSARY OF TERMS**
- U.O.N. - Unless Otherwise Noted
 - FOS - Face of Stud
 - FOSHTG - Face of Sheathing
 - PLF WL - Per Linear Foot Wind Load
 - PLF DL - Per Linear Foot Dead Load
 - PLF LL - Per Linear Foot Live Load
 - PSF - Per Square Foot
 - PFT - Prefabricated Trusses
 - RTU - Roof Top Unit
 - CU - Condenser Unit
 - EF - Exhaust Fan
 - TCDL - Top Chord Dead Load
 - BCDL - Bottom Chord Dead Load
 - TCLL - Top Chord Live Load
 - BCLL - Bottom Chord Live Load
 - T.B.E. - Truss Bearing Elevation