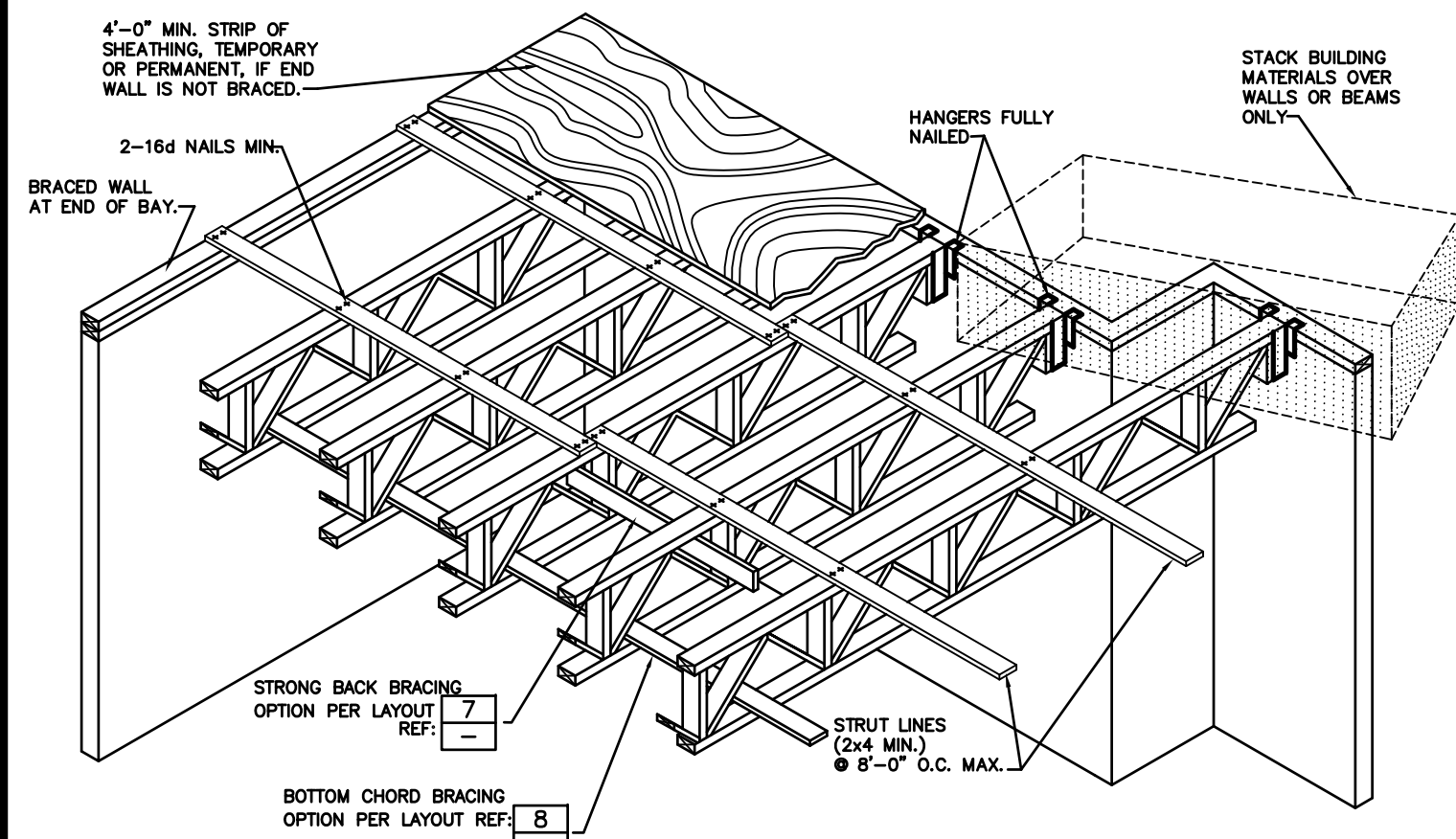
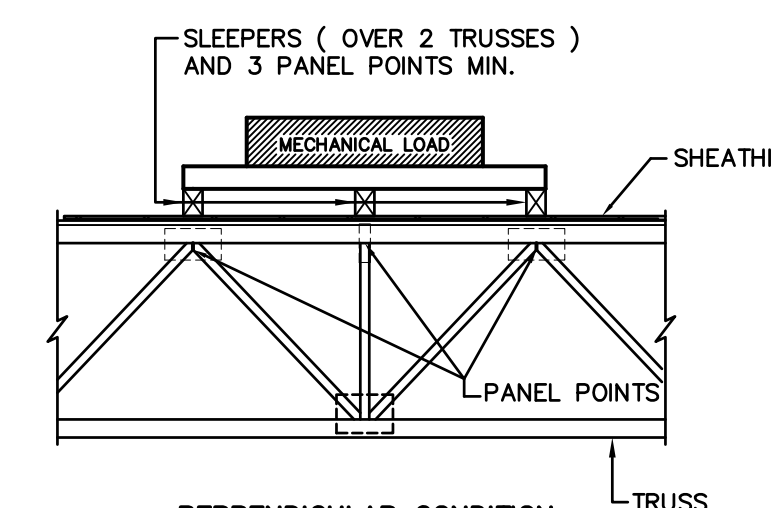
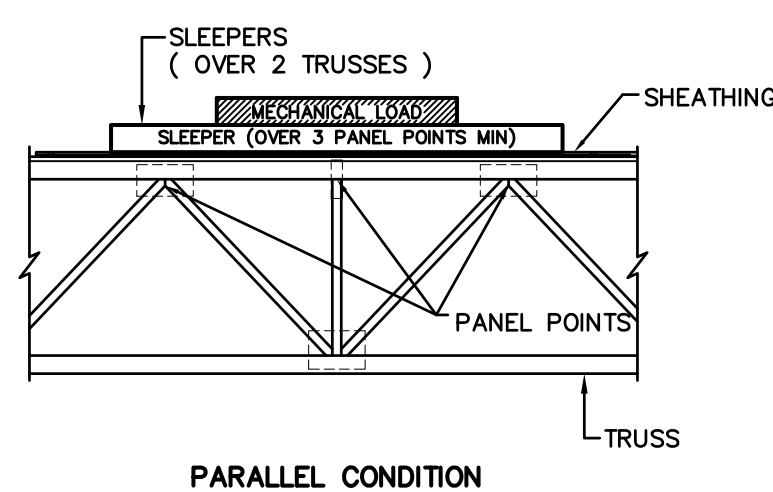


ATTENTION

NO ONE SHOULD BE ALLOWED ON ANY TRUSS UNTIL ALL HANGERS & CROSS BRIDGING, IF REQ'D, AND TEMPORARY BRACING ARE IN PLACE AND NAILED SECURELY. SERIOUS ACCIDENTS MAY OCCUR UNLESS CARE IS TAKEN TO PROPERLY BRACE DURING CONSTRUCTION. THIS DETAIL SHOULD BE USED AS A GUIDELINE FOR BRACING.



1 ERECTION BRACING

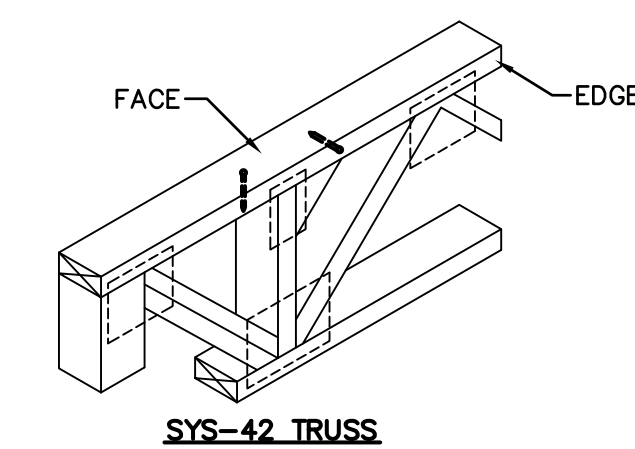


- NOTES**
- COORDINATE MECHANICAL LOCATIONS WITH LAYOUT AND TRUSS CALCULATIONS
 - SLEEPERS MUST BE LOCATED AT PANEL POINTS

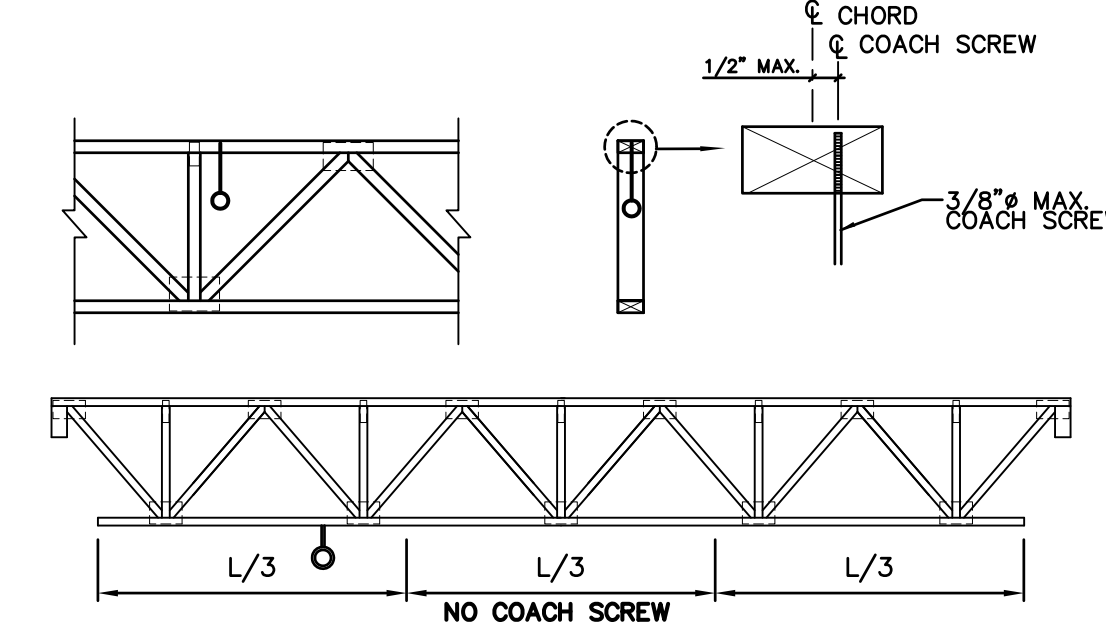
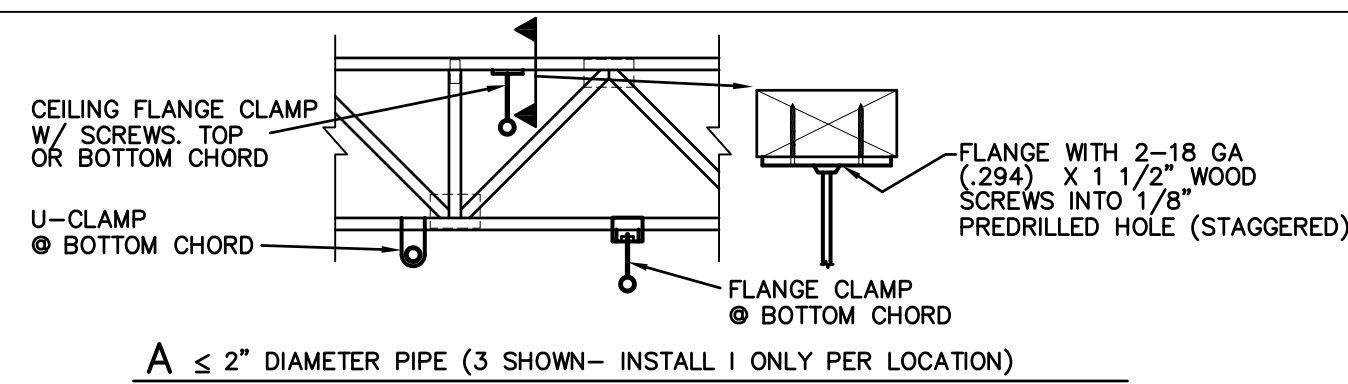
2 MECHANICAL LOADS ON TRUSSES

TRUSS NAILING CHART (MINIMUM ON CENTER SPACING)

NAIL TYPE	NAIL SIZE	FACE	EDGE
8d	BOX	0.113"x2 1/2"	2"
	COMMON	0.131"x2 1/2"	2"
10d	BOX	0.128"x3"	2"
	COMMON	0.148"x3"	3"
12d	BOX	0.128"x3 1/4"	3"
	COMMON	0.148"x3 1/4"	3"
16d	BOX	0.135"x3 1/2"	3"
	SINKER COMMON	0.148"x3 1/2"	4"

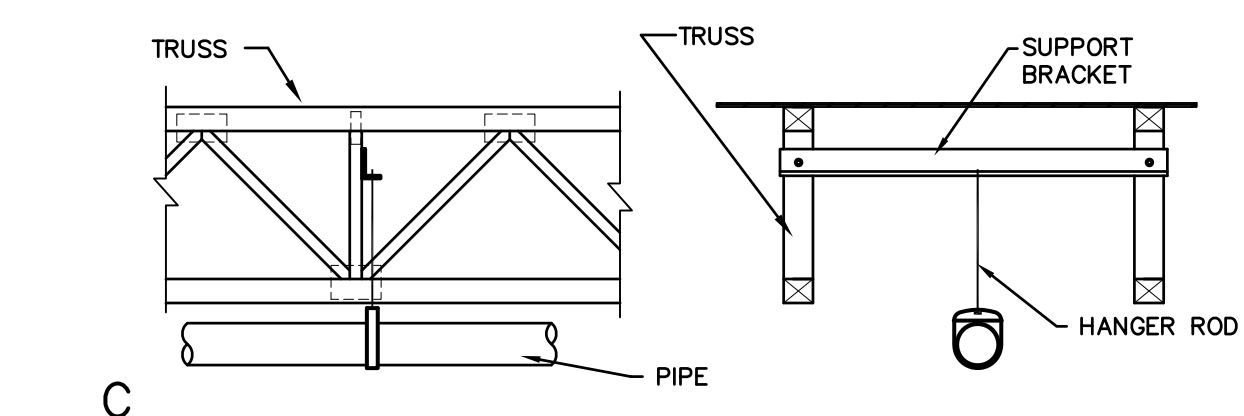


3 NAILING CHART



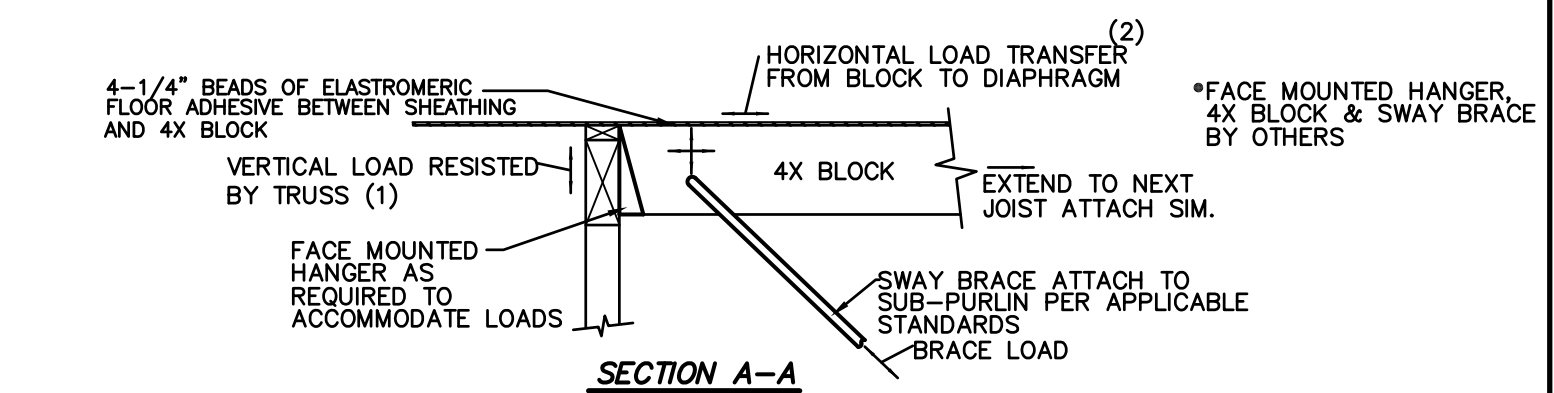
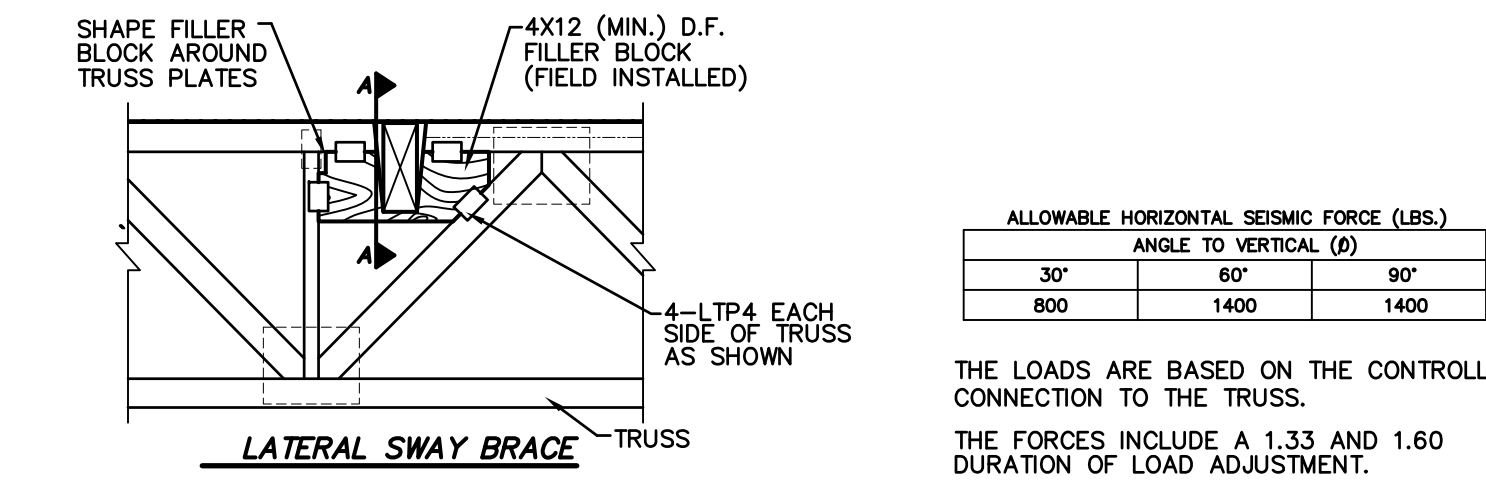
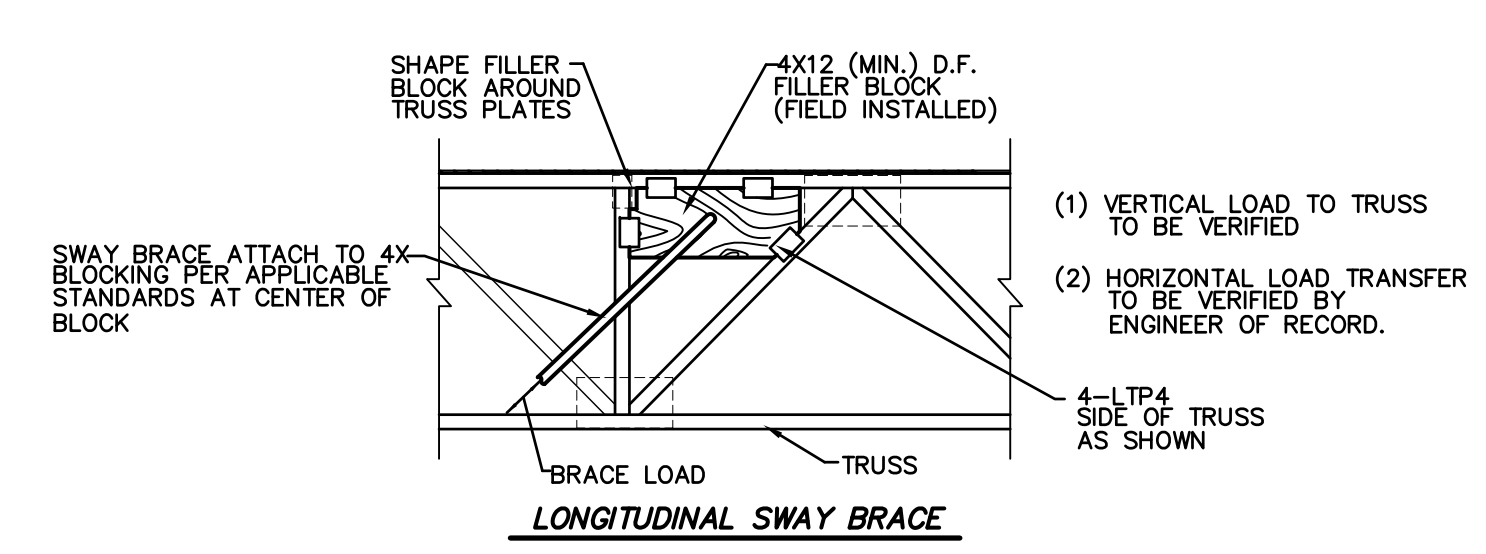
NOTE: AT BOTTOM CHORD COACH SCREW TO BE INSTALLED INTO PREDRILLED HOLE AND LOCATED IN OUTER 1/3 OF TRUSS SPAN ONLY.

B <= 2" DIAMETER PIPE
NOTE: PRE-DRILL COACH SCREW.

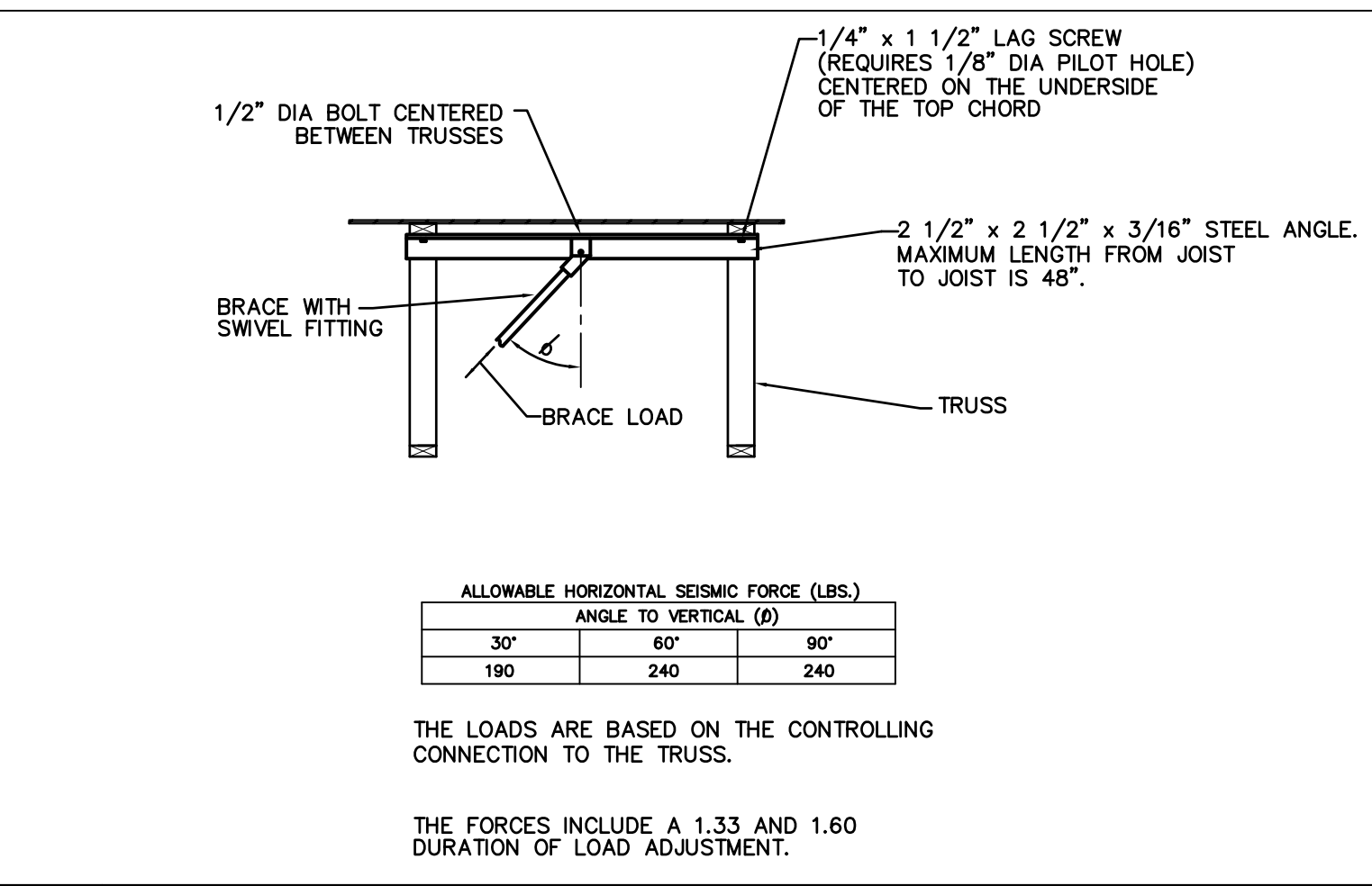


- NOTES:**
- WOOD SCREWS WITH A MAXIMUM DIAMETER OF 1/8" MAY BE USED ANYWHERE ON THE TOP CHORD OF THE TRUSS WITH A PRE-DRILLED PILOT HOLE, UNLESS NOTED OTHERWISE ON PLANS.
 - DO NOT DRILL HOLES, DRIVE HEAVY SCREWS, OR USE LAG BOLTS IN THE BOTTOM CHORD OF TRUSS, EXCEPT AS NOTED.
 - COORDINATE ATTACHMENT OF SPRINKLER PIPE GREATER THAN 3" DIAMETER AND LARGER WITH TRUSS LAYOUT AND CALCULATIONS. IT IS ASSUMED THAT THE ENGINEER OF RECORD HAS ALLOWED FOR BRANCH SPRINKLER LINES 3" DIAMETER AND LESS IN THE DESIGN DEAD LOAD.
 - ALL SPRINKLER AND SPRINKLER ATTACHMENTS INCLUDING WOOD SUPPORTS ARE TO BE FURNISHED AND INSTALLED BY OTHERS.

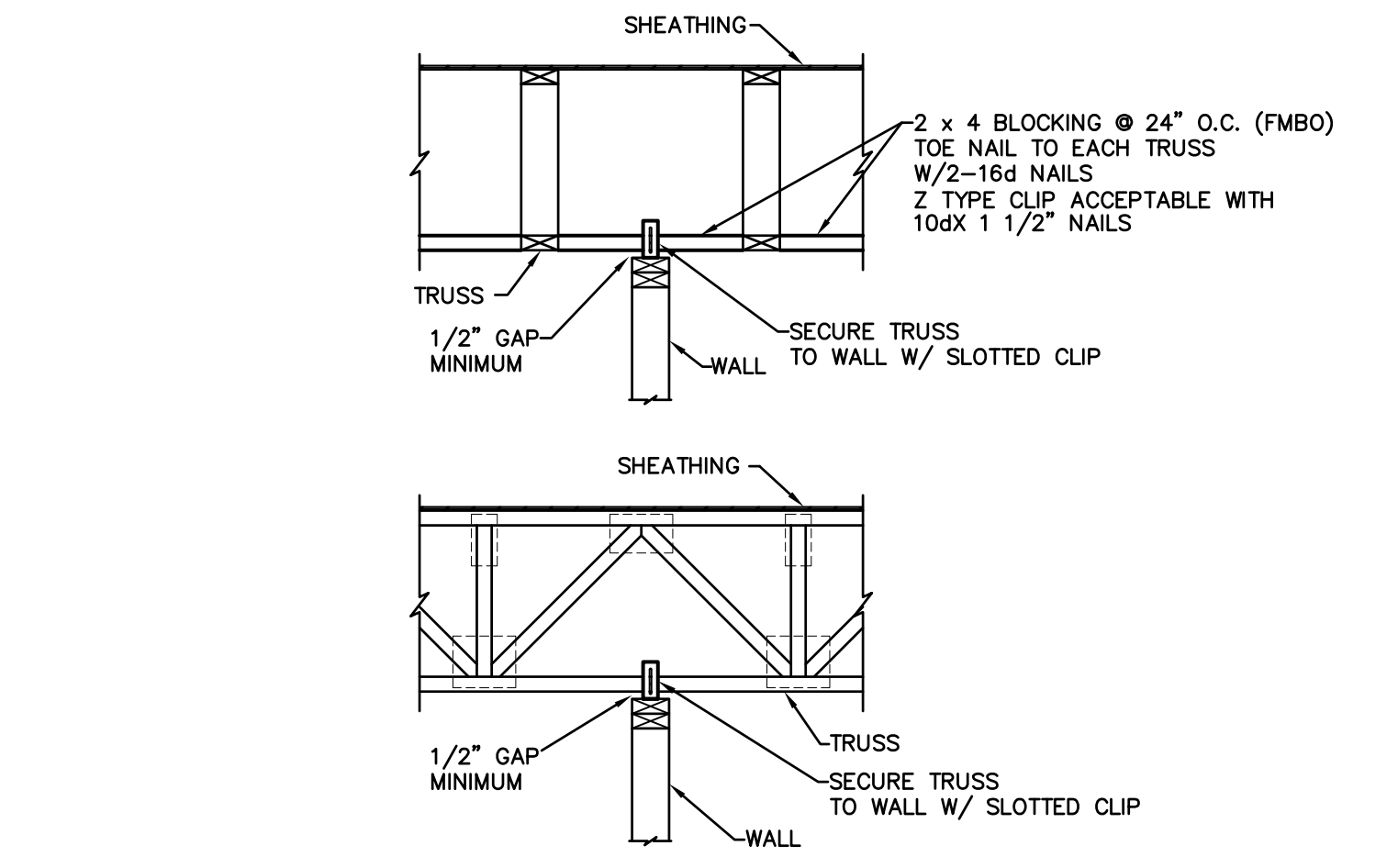
4 FIRE SPRINKLER ATTACHMENT DETAIL



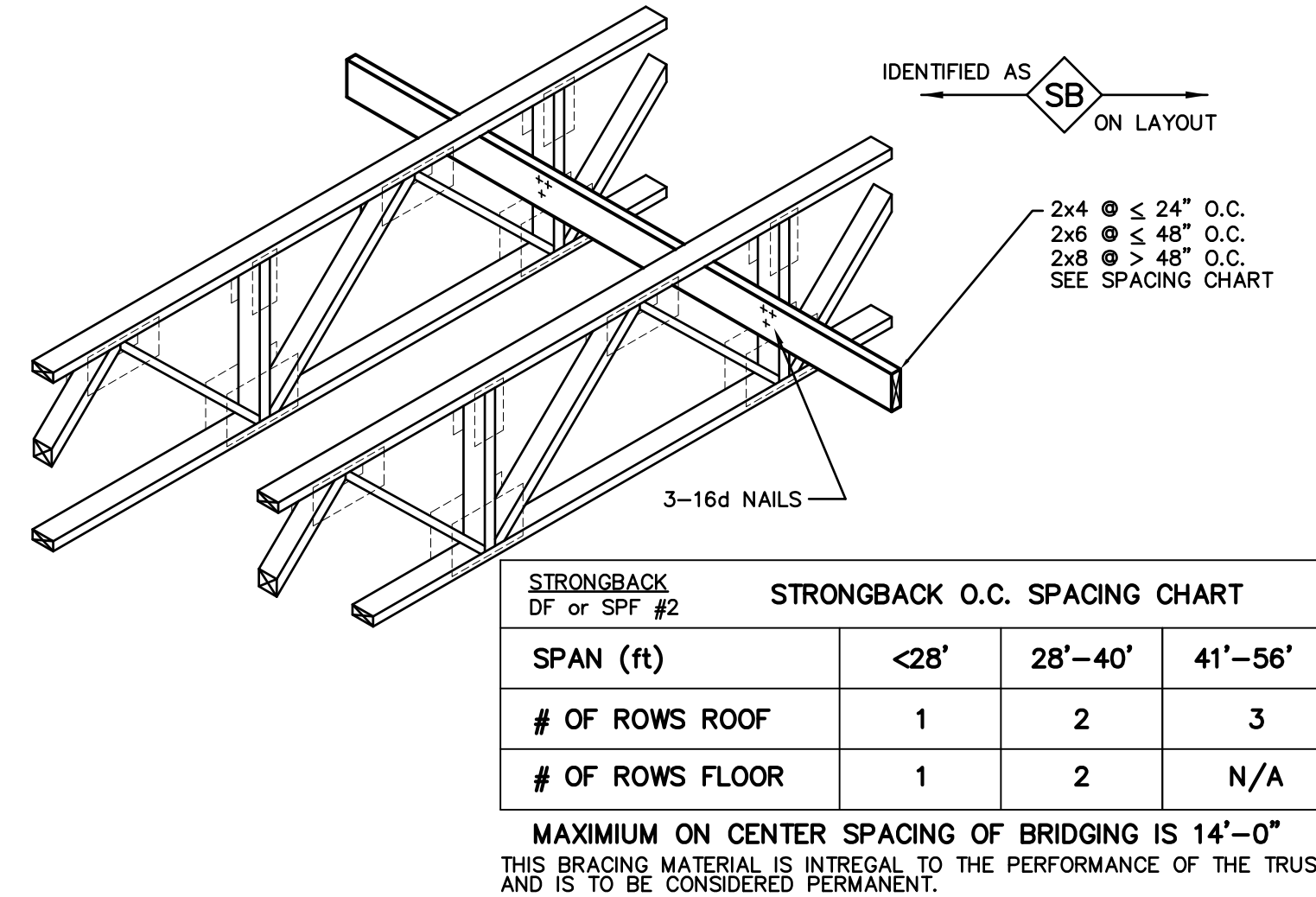
5A FIRE SPRINKLER SWAY BRACE DETAIL



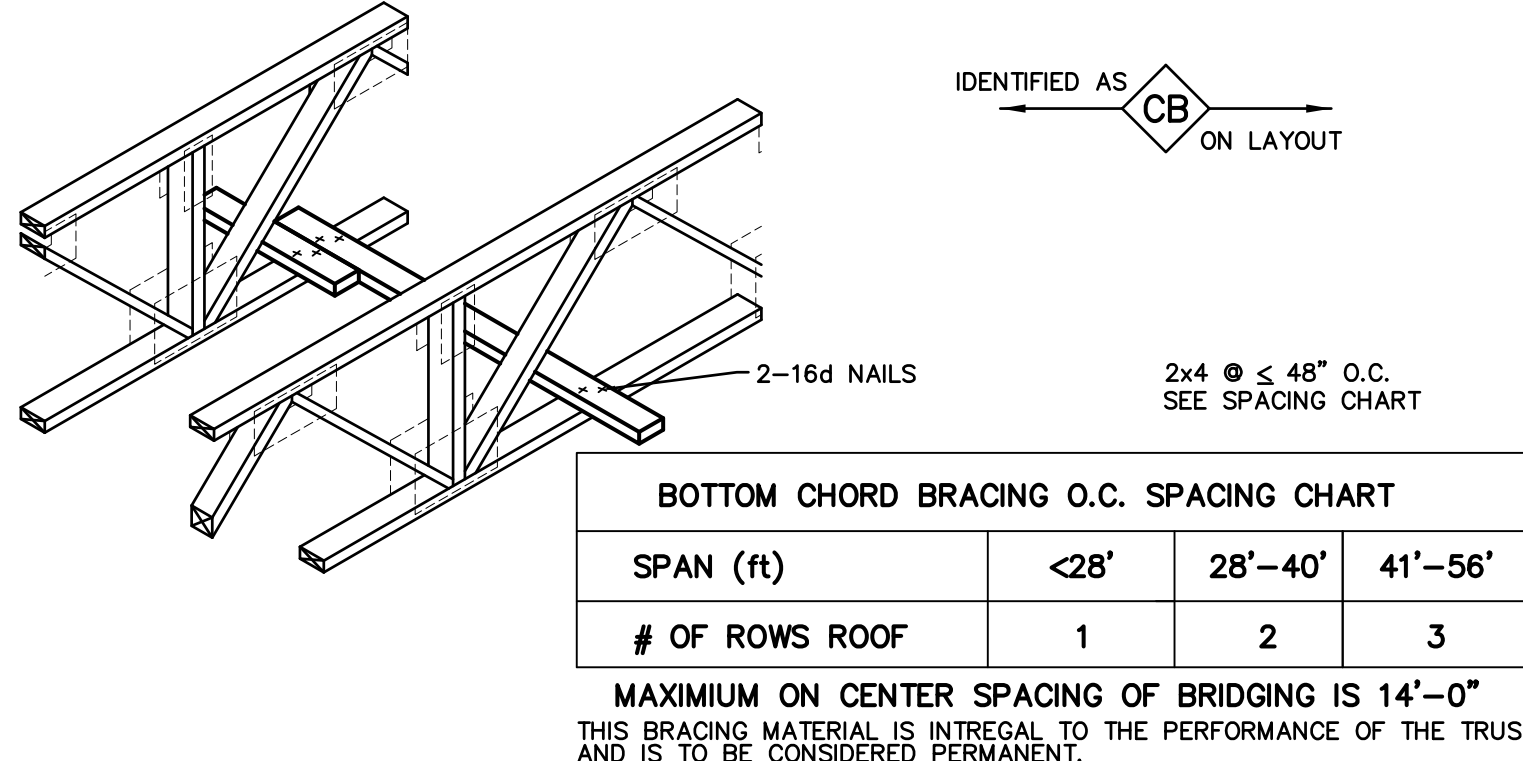
5B FIRE SPRINKLER SWAY BRACE DETAIL



6 TRUSS AT NON-BEARING WALL



7 STRONG BACK DETAIL



8 BOTTOM CHORD BRACING DETAIL

SYS-42 OPEN WEB TRUSS

JOB SITE HANDLING OF OPEN WEB TRUSSES

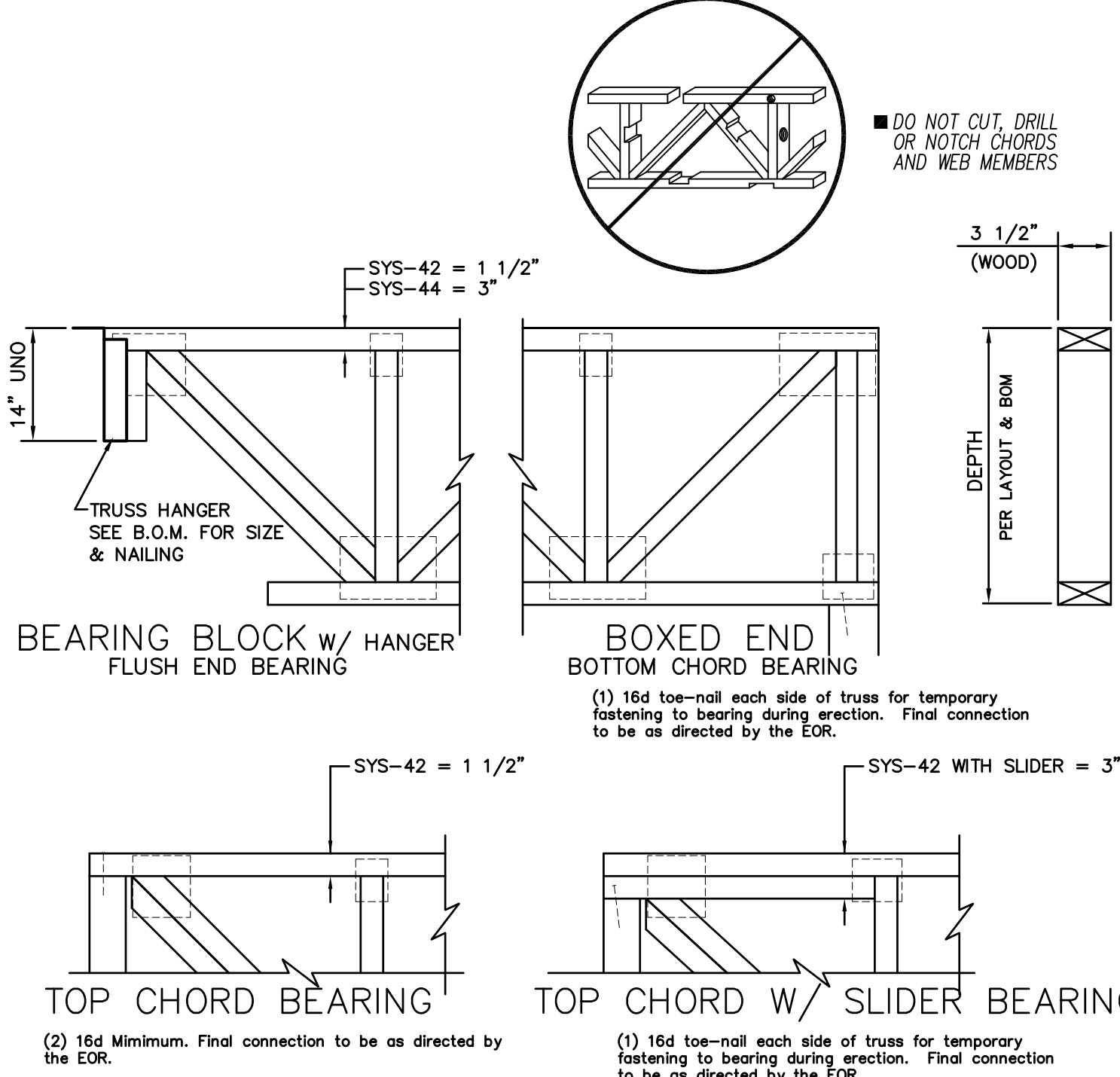
IT IS THE BUILDING CONTRACTOR'S RESPONSIBILITY TO UNLOAD THE TRUSSES FROM THE TRUCK AND FOR ALL HANDLING THEREAFTER. THE TRUSS GUARANTEE ONLY APPLIES AS LONG AS THE PRODUCT IS NOT DAMAGED OR ALTERED IN ANY WAY. IS INSTALLED IN A WORKMANLIKE MANNER AND ACCORDING TO THE INSTALLATION INFORMATION NOTED HEREIN. THE TRUSSES WILL BE DELIVERED TO THE JOBSITE IN BUNDLES BANNED TOGETHER FOR HANDLING EASE. TO AVOID DAMAGE, TRUSSES SHOULD BE LEFT IN THESE BUNDLES UNTIL READY FOR INSTALLATION IN THE STRUCTURE. A CARELESS CRANE OR FORKLIFT OPERATOR CAN DAMAGE THE TRUSSES. NEVER HANDLE THE TRUSSES FLAT - KEEP IN AN UPRIGHT POSITION.

STORAGE OF THE OPEN WEB TRUSSES

DURING STORAGE AT THE JOBSITE, KEEP THE TRUSSES IN AN UPRIGHT POSITION. THE BUNDLES SHOULD BE SUPPORTED ON LEVEL STICKERS TO KEEP THE TRUSSES OUT OF THE MUD AND DIRT. STACKING OF BUNDLES IS PERMITTED IF AN ADEQUATE NUMBER OF STICKERS ARE PROVIDED TO PREVENT DAMAGE AND NORMAL SAFETY PRECAUTIONS ARE FOLLOWED. LONG EXPOSURE TO WATER AND SUN WILL CAUSE SOME DETERIORATION AND CHECKING OF WOOD. THE TRUSSES SHOULD RECEIVE THE SAME PROTECTION FROM WEATHER AS OTHER WOOD PRODUCTS.

TYPICAL PROJECT NOTES:

- FOR NOTES, DETAILS, AND DIMENSIONS NOT ON THESE PRODUCT PLACEMENT PLAN DRAWINGS, REFER TO PROJECT PLANS.
- SEE BILLS OF MATERIAL FOR ITEMS FURNISHED.
- ALL CLOUDED NOTES, DIMENSIONS, ETC. REQUIRE VERIFICATION AND MUST BE MARKED EITHER "OK" OR THE CORRECT INFORMATION PROVIDED BY CUSTOMER, PRIOR TO RETURN TO BEING RETURNED FOR FABRICATION.
- PLEASE BE AWARE THAT ANY CLOUDED ITEMS NOT ACKNOWLEDGED WILL REQUIRE CONTACT WITH RESPONSIBLE PARTIES AND MAY CAUSE DELAY IN THE PROCESSING OF YOUR ORDER.
- PLEASE VERIFY THAT ALL INFORMATION PROVIDED HEREWITH REFLECTS THE LATEST AVAILABLE PROJECT INFORMATION AND THAT ALL G2T TRUSS LENGTHS CORRESPOND WITH ACTUAL FIELD DIMENSIONS PRIOR TO BEING RETURNED FOR FABRICATION.
- ALL BRACING SHOWN IS INTEGRAL TO THE SYS-42 OPEN WEB TRUSS SYSTEM AND IS NOT TEMPORARY OR ERECTION BRACING. THE OPEN WEB TRUSS WILL NOT SAFELY SUPPORT LOADS UNTIL FULLY BRACED, FULLY ATTACHED TO BEARING WALLS OR BEAMS, AND SHEATHING, IS PROPERLY INSTALLED (SEE LAYOUTS AND DETAILS).
- POINT LOADS THAT EXCEED 100 LBS. AS INDICATED ON THE PLACEMENT PLAN HEREIN.
- INSTALLATION OF THE OPEN WEB TRUSSES MUST FOLLOW ANY ADDITIONAL REQUIREMENTS INDICATED ON THE PLACEMENT PLAN AND IN THE CALCULATIONS.
- ALL THE OPEN WEB TRUSSES ARE DESIGNED FOR UNIFORM LOADS AND CONCENTRATED LOADS NOTED ON THESE DRAWINGS AND CALCULATIONS. TEMPORARY CONSTRUCTION LOADS WHICH CAUSE STRESSES BEYOND DESIGN CRITERIA ARE NOT PERMITTED.
- ALL 2X, 4X, 6X ETC. FRAMING TO BE SUPPLIED BY OTHERS, UNO. (FMBO).
- METAL STRAPS AND/OR TIES USED FOR SEISMIC PURPOSES THAT ARE NAILED TO THE TOP OF THE TOP CHORD ARE TO USE 10d NAILING AT NO LESS THAN 3" ON IN A ROW UNO. ACCEPTABLE STRAPS FOR THE TOP CHORDS ARE LTTI, LSTI, MSTI AND PAI OR OTHER COMPARABLE ITEMS UNO.
- THE OPEN WEB TRUSS ARE NOT DESIGNED TO SUPPORT ANY FIRE SPRINKLER AND/OR MECHANICAL LOADS OTHER THAN WHAT IS SHOWN WITHIN THESE DRAWINGS, AND OR WHAT HAS BEEN PROVIDED IN THE DESIGN DEAD LOAD(S).
- THE PLACEMENT OF THE MECHANICAL UNITS AND SPRINKLER MAINS ARE TO BE AS NOTED ON THE PLACEMENT PLAN. THE SUPPORTING TRUSSES HAVE BEEN SPECIFICALLY DESIGNED TO ACCOMMODATE THESE ITEMS. ALL COMPONENTS TRANSFERRING LOADS TO THE TRUSSES SHALL BE DESIGNED AND INSTALLED IN ACCORDANCE WITH THE DETAILS CONTAINED WITHIN THESE DRAWINGS. IF THE ACTUAL LOCATIONS DO NOT COINCIDE WITH THESE DRAWINGS CONTACT THE MANUFACTURER.
- SYS-42 TRUSS DESIGNS ARE IN ACCORDANCE WITH THE CURRENT ADOPTED EDITION OF THE IBC, CBC, AND NATIONAL DESIGN SPECIFICATION, AND CONFORM TO CURRENT ICC-ES REPORT.



9 SYS-42 TRUSS NOTES AND PROFILES

LEGEND / ABBREVIATIONS

SEE PROJECT PLANS FOR OTHER ABBREVIATIONS AND SYMBOLS USED.

- DETAIL (ON SHOP DRAWINGS)
- PROJECT PLAN DETAIL (PER PLANS)
- START TRUSS LAYOUT @ o/c SPACING
- STRONGBACK LOCATION
- DIRECTION OF ROOF SLOPE

FMBO = FRAMING MATERIAL BY OTHERS
NIC = NOT IN CONTRACT
UNO = UNLESS NOTED OTHERWISE
LBS = POUNDS
PSF = POUNDS PER SQUARE FOOT
PLF = POUNDS PER LINEAL FOOT
DBL = DOUBLE MEMBER (TPL = TRIPLE MEMBER)

REVISIONS

CULTIVATION FACILITY AND DSITRIBUTION CENTER
5801-5831 SAN LEANDRO STREET
OAKLAND, CA

ENGINEER: MOSSBERG ENGINEERING 415-535-1022
ARCHITECT: STUDIO 4 ARCHITECTURE 510-444-3407
CUSTOMER: JH PROPERTY MANAGEMENT CORP 510-213-5588

G2 NATIONAL
Evolution in Wood-Framed Structure.
202 N. CALIFORNIA AVE., SUITE 100, SAN JOSE, CA 95131
925.852.1110, DRIVE #212, SPARKS, NV 89431

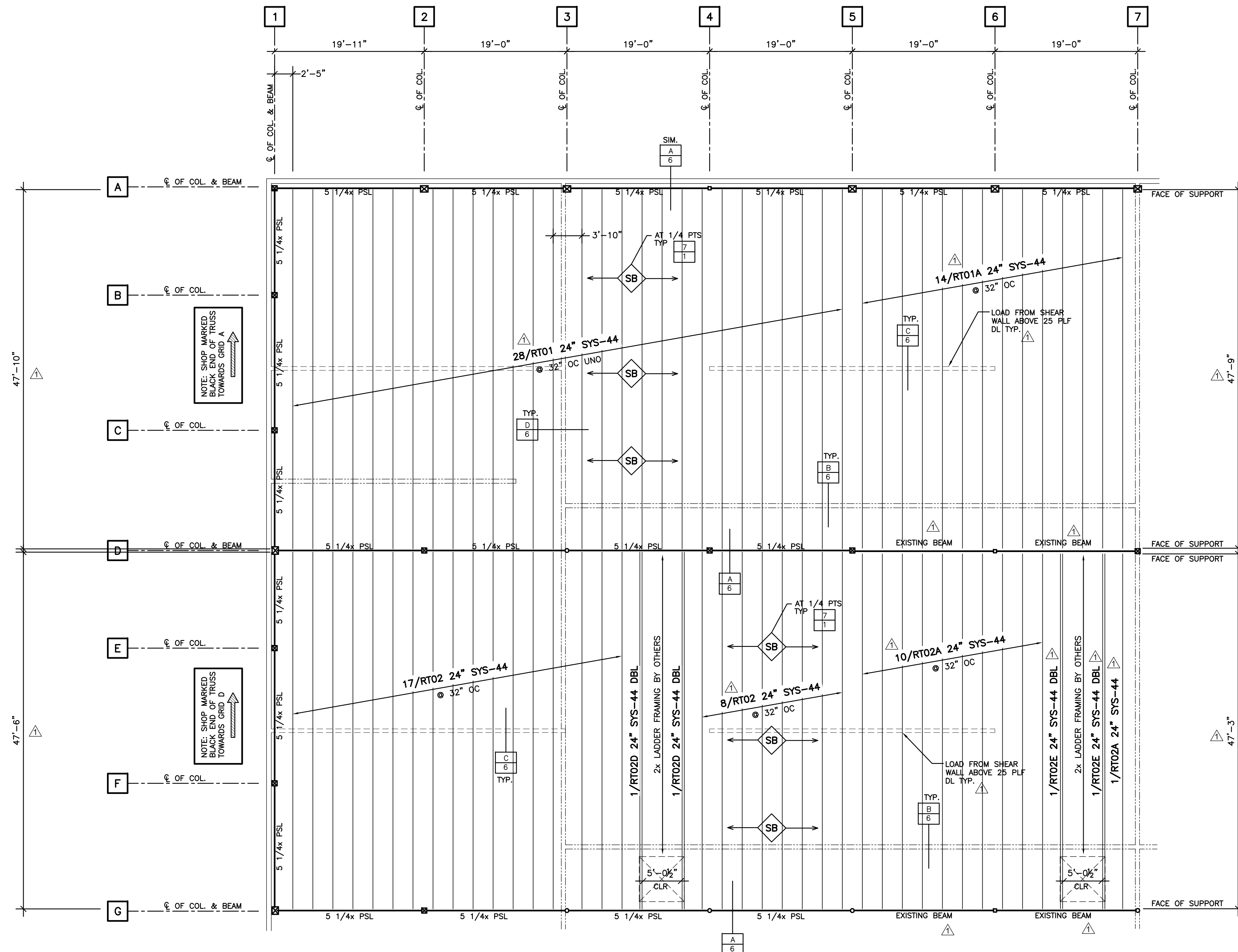
PN-13703
SHEET 1 OF 6

NOTE: SPRINKLER LINES GREATER THAN 3" DIAMETER HAVE NOT BEEN CONSIDERED IN THE TRUSS DESIGNS

PROJECT PLANS USED:	
SHEETS	DATE
ARCHITECTURAL DRAWINGS	
A000 THRU A601	10/31/18
STRUCTURAL DRAWINGS	
S101 THRU S403	10/31/18

DESIGN LOADS	
LIVE LOAD	20 PSF
WIND LOAD	15 PSF
DEAD LOAD	15 PSF
TOTAL LOAD	50 PSF

DESIGN DEFLECTION:
 $\Delta_{LL} \leq L/240$ $\Delta_{TL} \leq L/180$
 LOAD DURATION FACTOR = 1.25
 DESIGN CODE: CBC 2016
 DEAD LOAD BREAKDOWN: 10 PSF TC / 5 PSF BC

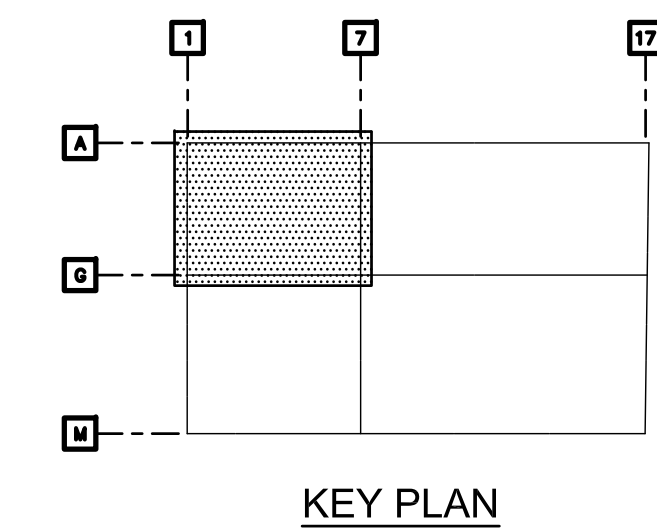


SYS TRUSS LIST						
MARK	QTY	CLR SPAN	MFR LENGTH	DEPTH/SERIES	HANGER (BLACK END)	HANGER (OTHER END)
RT01	28	47'-10"	47'-9 5/8"	24" SYS-44	BA3.56/14	BA3.56/14
RT01A	14	47'-9"	47'-8 5/8"	24" SYS-44	BA3.56/14	HU414
RT02D	2	47'-6"	47'-5 1/4"	24" SYS-44 DBL	KHW7.25/14	KHW7.25/14
RT02	25	47'-6"	47'-5 5/8"	24" SYS-44	BA3.56/14	BA3.56/14
RT02A	11	47'-3"	47'-2 5/8"	24" SYS-44	HU414	HU414
RT02E	2	47'-3"	47'-2 5/8"	24" SYS-44 DBL	HU814	HU814

SIMPSON CONNECTORS					
QTY	MARK	DESCRIPTION	NAILING		REMARKS
			HEADER	JOIST	
120	RH01	BA3.56/14	6-16d	2-10d x 1 1/2	SINGLE
36	RH03	HU414	24-16d	12-10d	SINGLE
4	RH04	HU814	24-16d	12-16d	DOUBLE

USP/MITEK CONNECTOR					
QTY	MARK	DESCRIPTION	NAILING		REMARKS
			HEADER	JOIST	
4	RH02	KHWXX W=7.25" H=14"	4-NA20D	2-10d	DOUBLE

MISC. MATERIAL LIST			
ITEM	QTY	USE	
2x6 B/C BRACING	725 LF	STD G2T B/C BRACING	(SEE DETAIL 7/1)



PARTIAL ROOF PRODUCT PLACEMENT PLAN

(REF: S221)
 SCALE: 1/8" = 1'-0"

REVISIONS	
3-20-19	Per reviewed drawings and 4-12-19 field dimensions
4-19-19	
4-24-19	

CULTIVATION FACILITY AND DSITRIBUTION CENTER
 5801-5831 SAN LEANDRO STREET
 OAKLAND, CA

ENGINEER: MOSSBY ENGINEERING
 412-838-9022
 ARCHITECT: STUDIO ARCHITECTURE
 510-644-3407
 CUSTOMER: JH PROPERTY MANAGEMENT CORP
 510-213-5998

G2 NATIONAL
 Evolution in Wood-Framed Structure.
 63 W. MAIN ST., SUITE 200
 GREENWICH, NY 10309

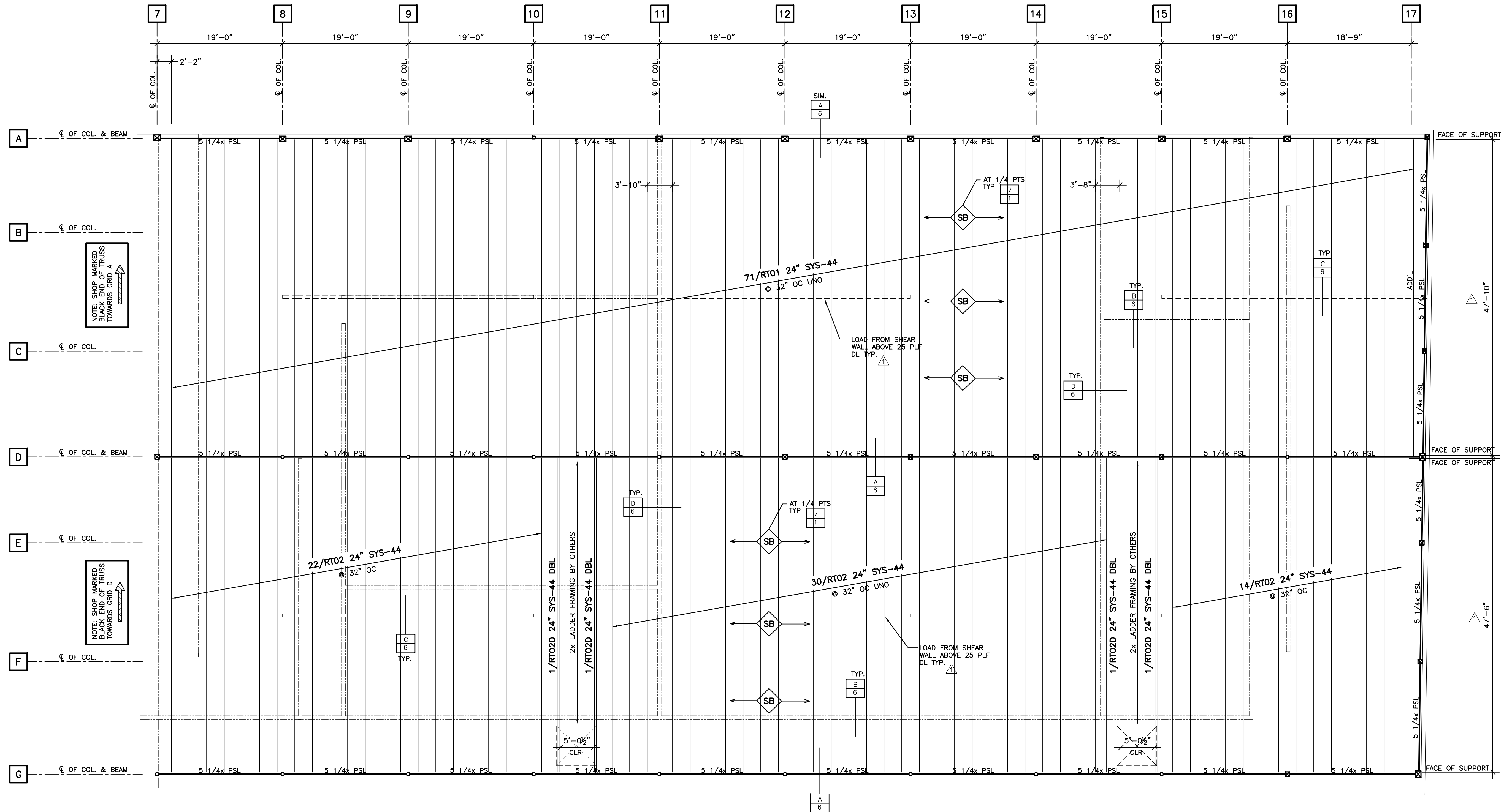
NOTE: SPRINKLER LINES GREATER THAN 3" DIAMETER HAVE NOT BEEN CONSIDERED IN THE TRUSS DESIGNS

PROJECT PLANS USED:	
SHEETS	DATE
ARCHITECTURAL DRAWINGS	
A000 THRU A601	10/31/18
STRUCTURAL DRAWINGS	
S101 THRU S403	10/31/18

DESIGN LOADS	
LIVE LOAD	20 PSF
DEAD LOAD	15 PSF
TOTAL LOAD	35 PSF

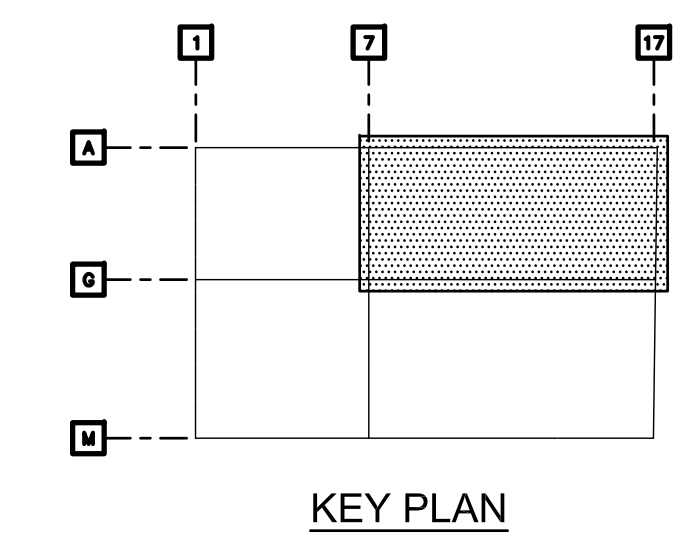
DESIGN DEFLECTION:
 $\Delta_L \leq L/240$ $\Delta_T \leq L/180$
 LOAD DURATION FACTOR = 1.25
 DESIGN CODE: CBC 2018
 DEAD LOAD BREAKDOWN: 10 PSF TC
 5 PSF BC

REVISIONS	
3-20-19	Per reviewed drawings and 4-12-19 field dimensions
4-19-19	
4-24-19	



PARTIAL ROOF PRODUCT PLACEMENT PLAN

(REF: S221 & S222)
SCALE: 1/8" = 1'-0"



SYS TRUSS LIST						
MARK	QTY	CLR SPAN	MFR LENGTH	DEPTH/SERIES	HANGER (BLACK END)	HANGER (OTHER END)
RT01	71	47'-10"	47'-9 5/8"	24" SYS-44	BA3.56/14	BA3.56/14
RT02D	4	47'-6"	47'-5 1/4"	24" SYS-44 DBL	KHW7.25/14	KHW7.25/14
RT02	66	47'-6"	47'-5 5/8"	24" SYS-44	BA3.56/14	BA3.56/14

SIMPSON CONNECTORS					
QTY	MARK	DESCRIPTION	NAILING		REMARKS
			HEADER	JOIST	
274	RH01	BA3.56/14	6-16d	2-10d x 1 1/2	SINGLE

USP/MITEK CONNECTORS					
QTY	MARK	DESCRIPTION	NAILING		REMARKS
			HEADER	JOIST	
8	RH02	KHWXX W=7.25" H=14"	4-NA20D	2-10d	DOUBLE

MISC. MATERIAL LIST			
ITEM	QTY	USE	
2x6 B/C BRACING	1216 LF	STD G2T B/C BRACING (SEE DETAIL 7/1)	

CULTIVATION FACILITY AND DSITRIBUTION CENTER
5801-5831 SAN LEANDRO STREET
OAKLAND, CA

ENGINEER: MOSSBY ENGINEERING
412-838-9022
ARCHITECT: STUDIO ARCHITECTURE
510-644-3407
CUSTOMER: JH PROPERTY MANAGEMENT CORP
510-213-6998

G2 NATIONAL
Evolution in Wood-Framed Structure.
9200 GREEN VALLEY CIRCLE
DRIVE #212 SPARKS, NV 89431

02/28/2019
PN-13703
SHEET
3 OF 6

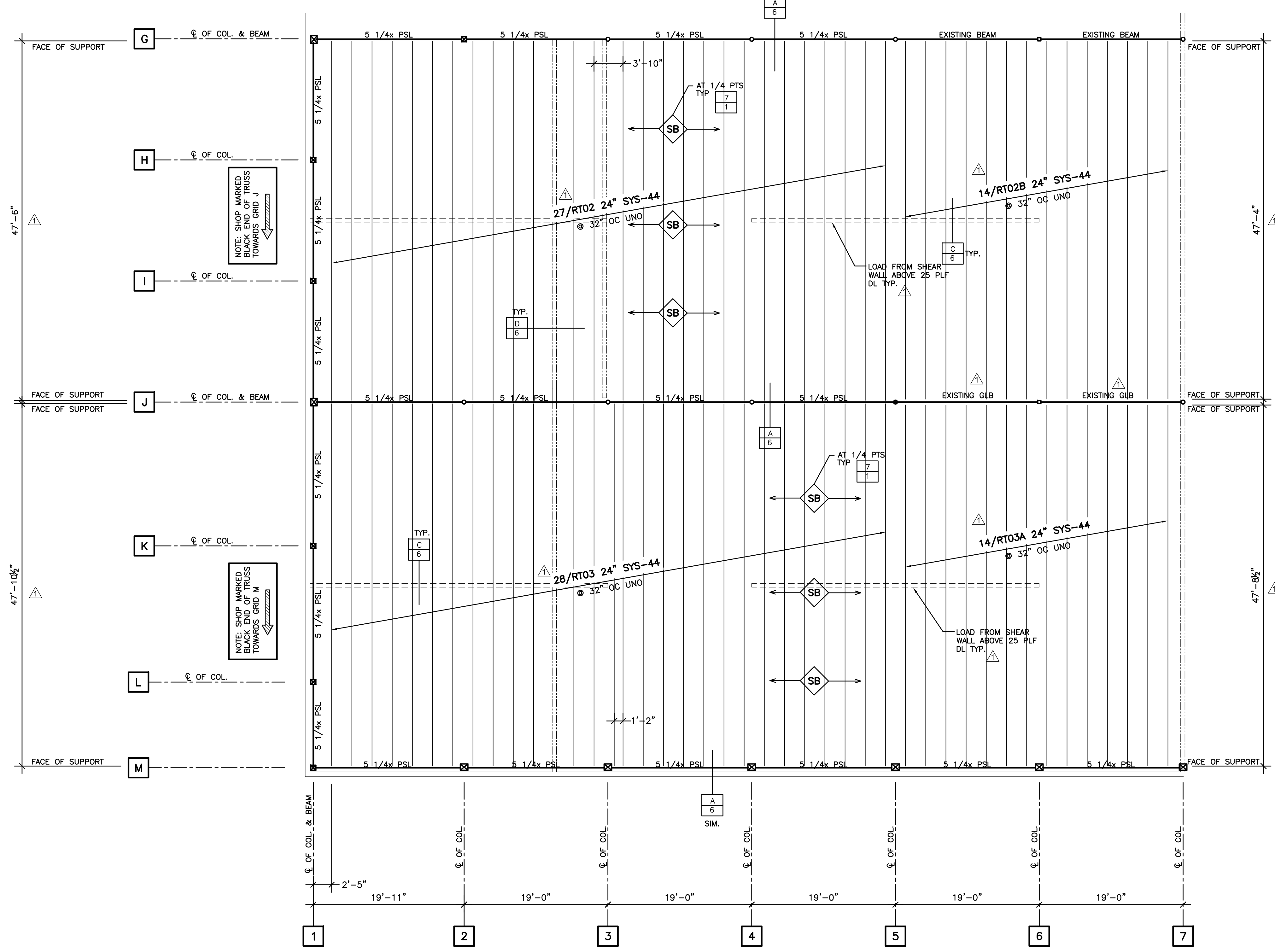
REVISED FOR CONSTRUCTION

NOTE: SPRINKLER LINES GREATER THAN 3" DIAMETER HAVE NOT BEEN CONSIDERED IN THE TRUSS DESIGNS

PROJECT PLANS USED:	
SHEETS	DATE
ARCHITECTURAL DRAWINGS	
A000 THRU A601	10/31/18
STRUCTURAL DRAWINGS	
S101 THRU S403	10/31/18

DESIGN LOADS	
LIVE LOAD	20 PSF
DEAD LOAD	15 PSF
TOTAL LOAD	35 PSF

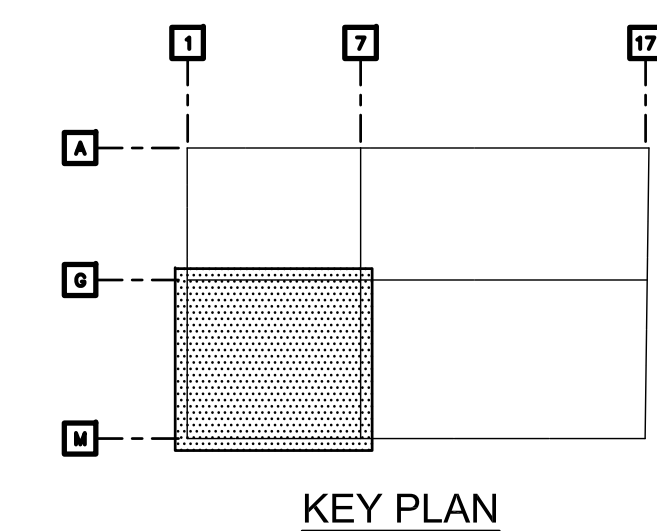
DESIGN DEFLECTION:
 $\Delta_{LL} \leq L/240$ $\Delta_{TL} \leq L/180$
 LOAD DURATION FACTOR = 1.25
 DESIGN CODE: CBC 2018
 DEAD LOAD BREAKDOWN: 10 PSF TC
 5 PSF BC



SYS TRUSS LIST						
MARK	QTY	CLR SPAN	MFR LENGTH	DEPTH/SERIES	HANGER (BLACK END)	HANGER (OTHER END)
RT02	27	47'-6"	47'-5 5/8"	24" SYS-44	BA3.56/14	BA3.56/14
RT02B	14	47'-4"	47'-3 5/8"	24" SYS-44	HU414	BA3.56/14
RT03	28	47'-10 1/2"	47'-10 1/8"	24" SYS-44	BA3.56/14	BA3.56/14
RT03A	14	47'-8 1/2"	47'-8 1/8"	24" SYS-44	BA3.56/14	HU414

SIMPSON CONNECTORS					
QTY	MARK	DESCRIPTION	NAILING		REMARKS
			HEADER	JOIST	
138	RH01	BA3.56/14	6-16d	2-10d x 1 1/2	SINGLE
28	RH03	HU414	24-16d	12-10d	SINGLE

MISC. MATERIAL LIST			
ITEM	QTY	USE	
2x6 B/C BRACING	725 LF	STD G2T B/C BRACING	(SEE DETAIL 7/1)



PARTIAL ROOF PRODUCT PLACEMENT PLAN

(REF: S223)
 SCALE: 1/8" = 1'-0"

REVISIONS
3-20-19 Per reviewed drawings and 4-12-19 field dimensions

CULTIVATION FACILITY AND DSITRIBUTION CENTER
 5801-5831 SAN LEANDRO STREET
 OAKLAND, CA

ENGINEER	MOSSBY ENGINEERING
ARCHITECT	STUDIO ARCHITECTURE
CUSTOMER	JH PROPERTY MANAGEMENT CORP

G2 NATIONAL
 Evolution in Wood-Framed Structure.
 2748 GREEN VALLEY DRIVE #212, SEABOARD, NV 89431

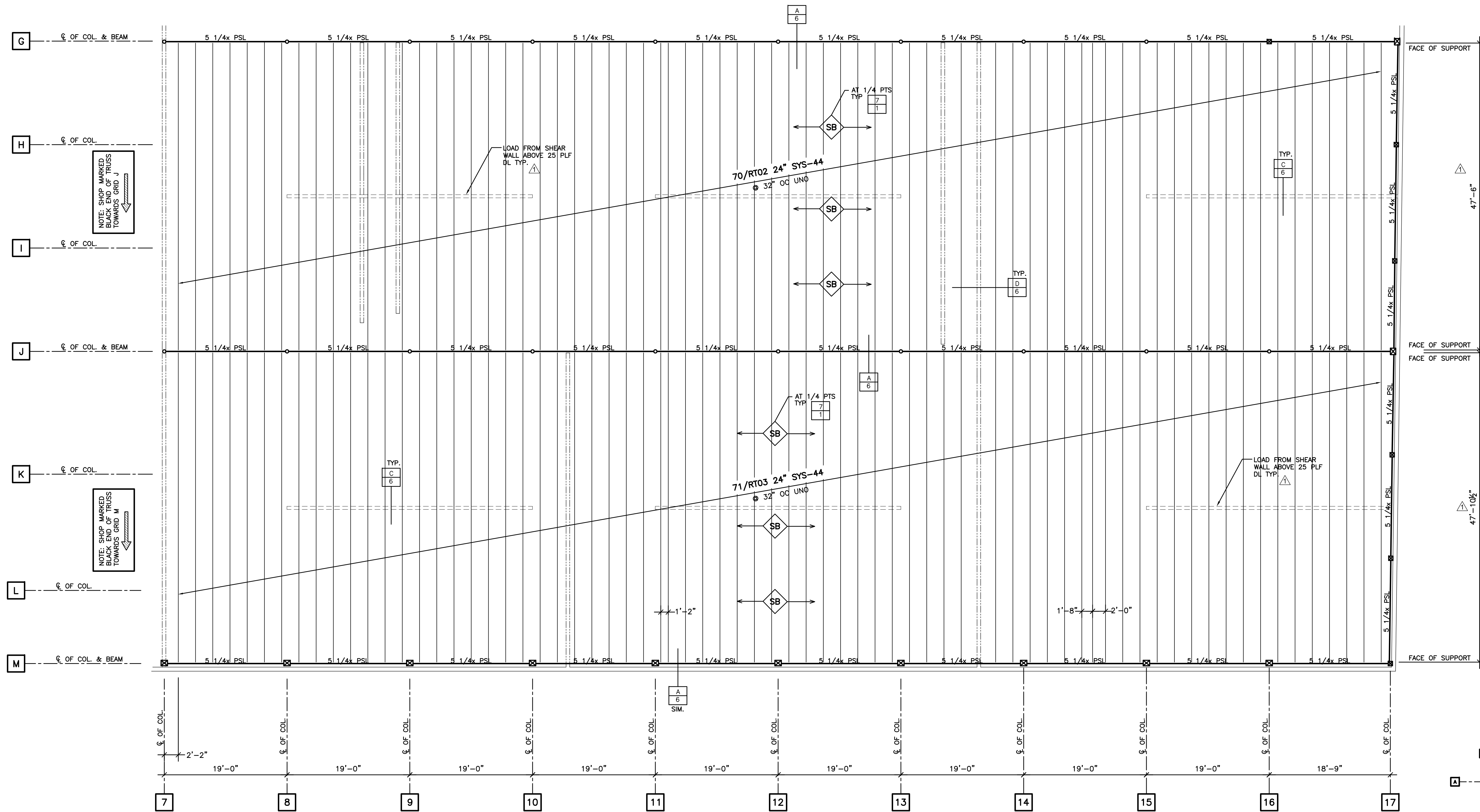
REVISED FOR CONSTRUCTION

NOTE: SPRINKLER LINES GREATER THAN 3" DIAMETER HAVE NOT BEEN CONSIDERED IN THE TRUSS DESIGNS

PROJECT PLANS USED:	
SHEETS	DATE
ARCHITECTURAL DRAWINGS	
A000 THRU A601	10/31/18
STRUCTURAL DRAWINGS	
S101 THRU S403	10/31/18

DESIGN LOADS	
LIVE LOAD	20 PSF
DEAD LOAD	15 PSF
TOTAL LOAD	35 PSF

DESIGN DEFLECTION:
 $\Delta_{LL} \leq L/240$ $\Delta_{TL} \leq L/180$
 LOAD DURATION FACTOR = 1.25
 DESIGN CODE: CBC 2018
 DEAD LOAD BREAKDOWN: 10 PSF TC
 5 PSF BC



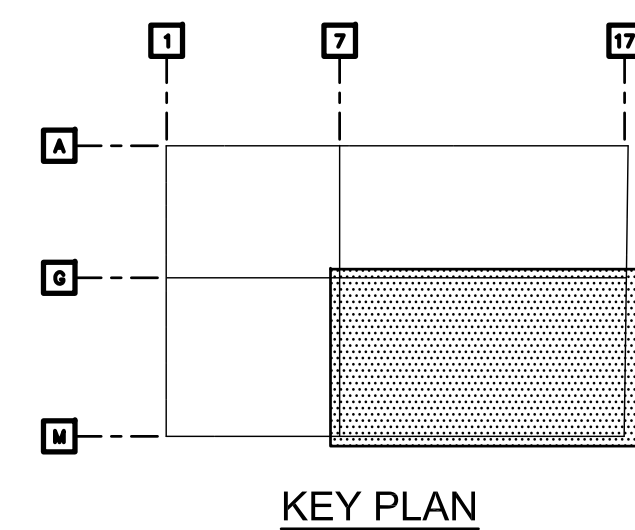
PARTIAL ROOF PRODUCT PLACEMENT PLAN

(REF: S223 & S224)
 SCALE: 1/8" = 1'-0"

G2T TRUSS LIST						
MARK	QTY	CLR SPAN	MFR LENGTH	DEPTH/SERIES	HANGER (BLACK END)	HANGER (OTHER END)
RT02	70	47'-6"	47'-5 5/8"	24" SYS-44	BA3.56/14	BA3.56/14
RT03	71	47'-10 1/2"	47'-10 1/8"	24" SYS-44	BA3.56/14	BA3.56/14

SIMPSON CONNECTORS					
QTY	MARK	DESCRIPTION	NAILING		REMARKS
			HEADER	JOIST	
282	RH01	BA3.56/14	6-16d	2-10d x 1/2	SINGLE

MISC. MATERIAL LIST		
ITEM	QTY	USE
2x6 B/C BRACING	1216 LF	STD G2T B/C BRACING (SEE DETAIL 7/1)



REVISIONS	
1	3-20-19 Per reviewed drawings and 4-12-19 field dimensions
2	
3	
4	
5	

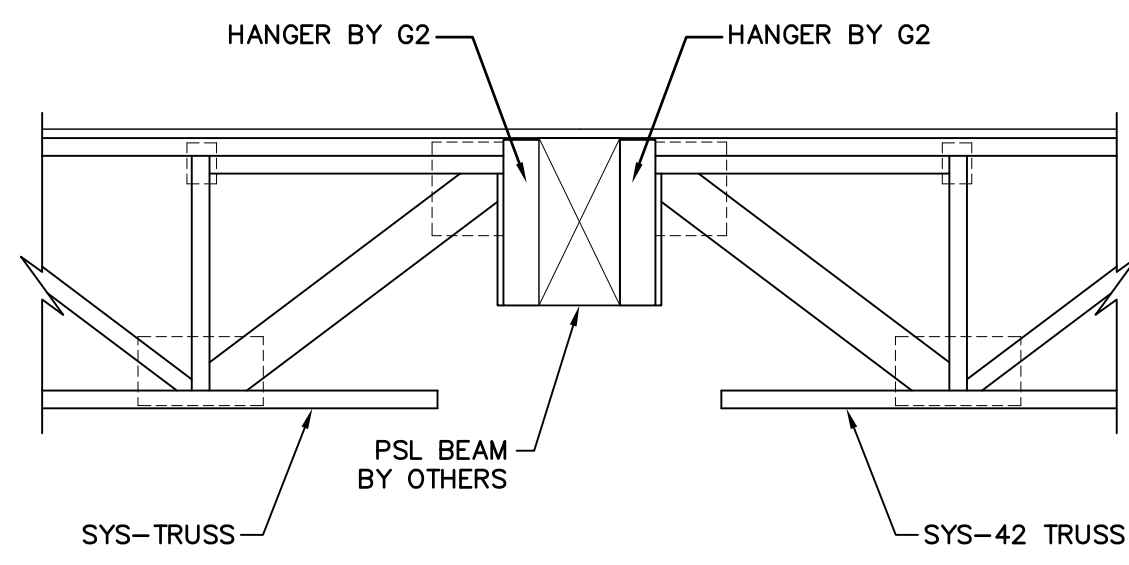
CULTIVATION FACILITY AND DISTRIBUTION CENTER
 5801-5831 SAN LEANDRO STREET
 OAKLAND, CA

ENGINEER
 MOSSING ENGINEERING
 412-338-0022
 ARCHITECT
 STUDIO 4 ARCHITECTURE
 510-644-3407
 CUSTOMER
 JH PROPERTY MANAGEMENT CORP
 510-213-5998

G2 NATIONAL
 Evolution in Wood-Framed Structure.[®]
 9205 GREENHURST DRIVE #212 SPARKS, NY 09431

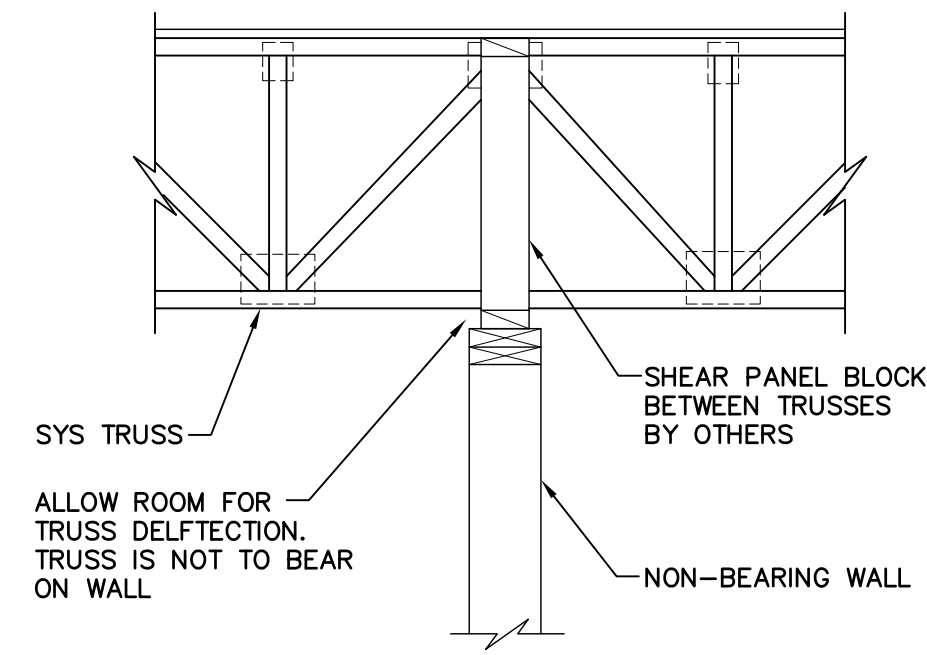
02/28/2019
 PN-13703
 SHEET
 5 OF 6

REVISED FOR CONSTRUCTION



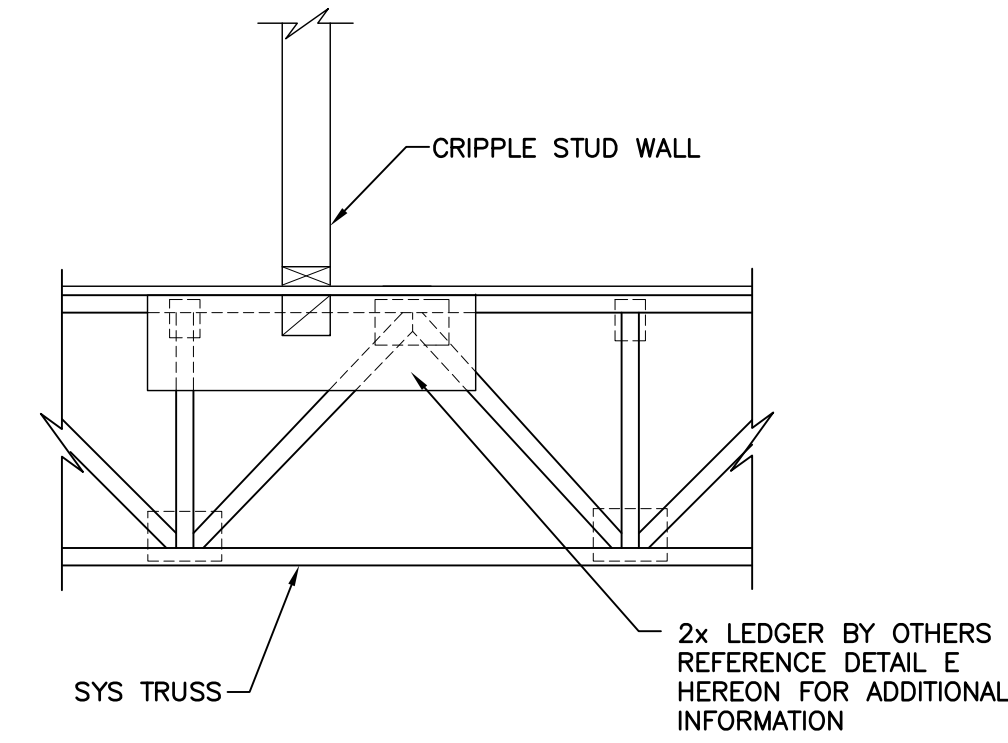
REF: 6,10/S402

A
-



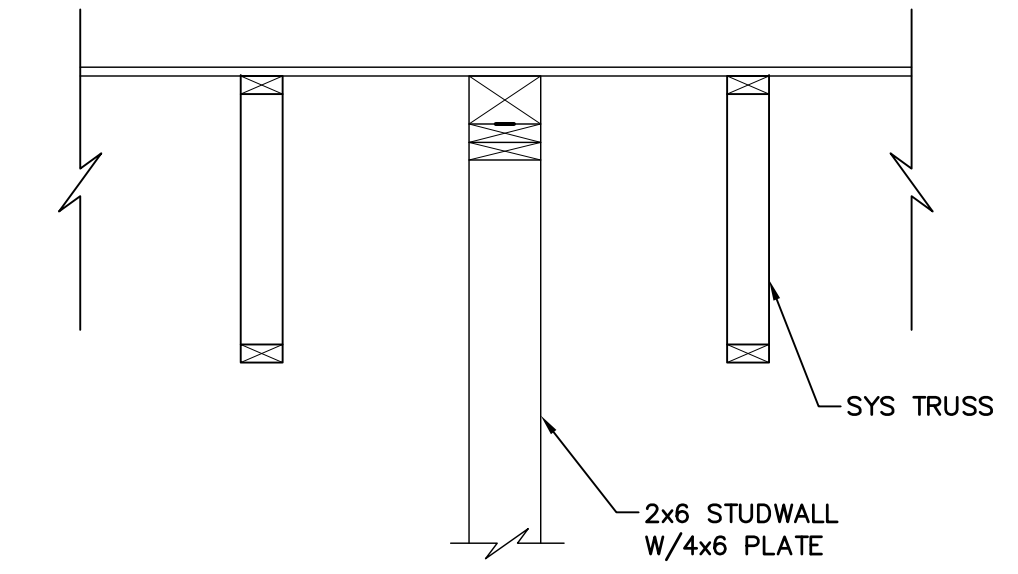
REF: 8/S402

B
-



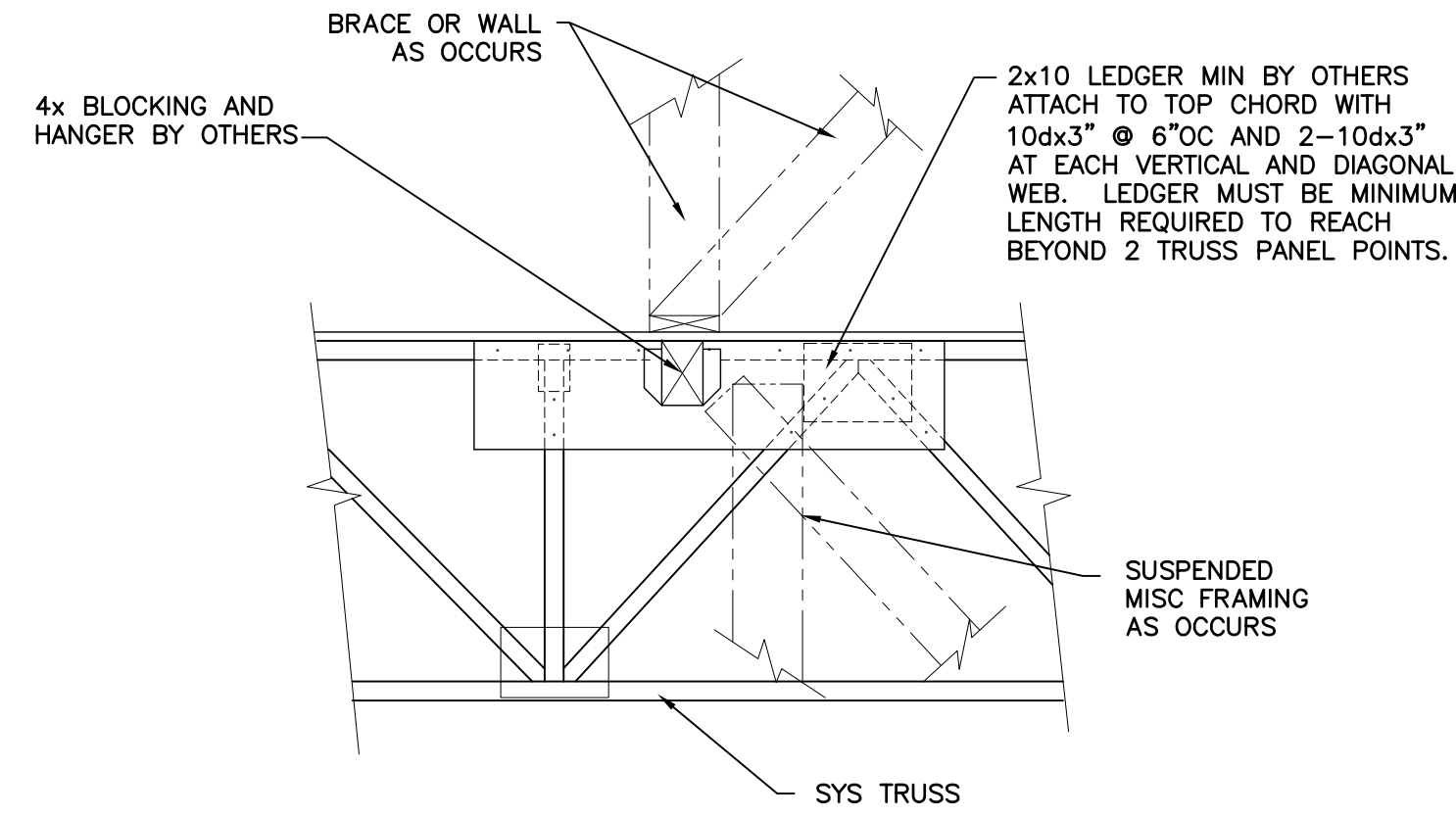
REF: 7/S402

C
-



REF: 4/S402

D
-



X
-

REVISIONS

Δ	
Δ	
Δ	
Δ	
Δ	

CULTIVATION FACILITY AND DSITRIBUTION CENTER
5801-5831 SAN LEANDRO STREET
OAKLAND, CA

ENGINEER
MOSS & ASSOCIATES
412-838-1022

ARCHITECT
STUDIO 4 ARCHITECTURE
510-644-3407

CUSTOMER



PN-13703

REVISED FOR CONSTRUCTION

SHEET
6 OF 6